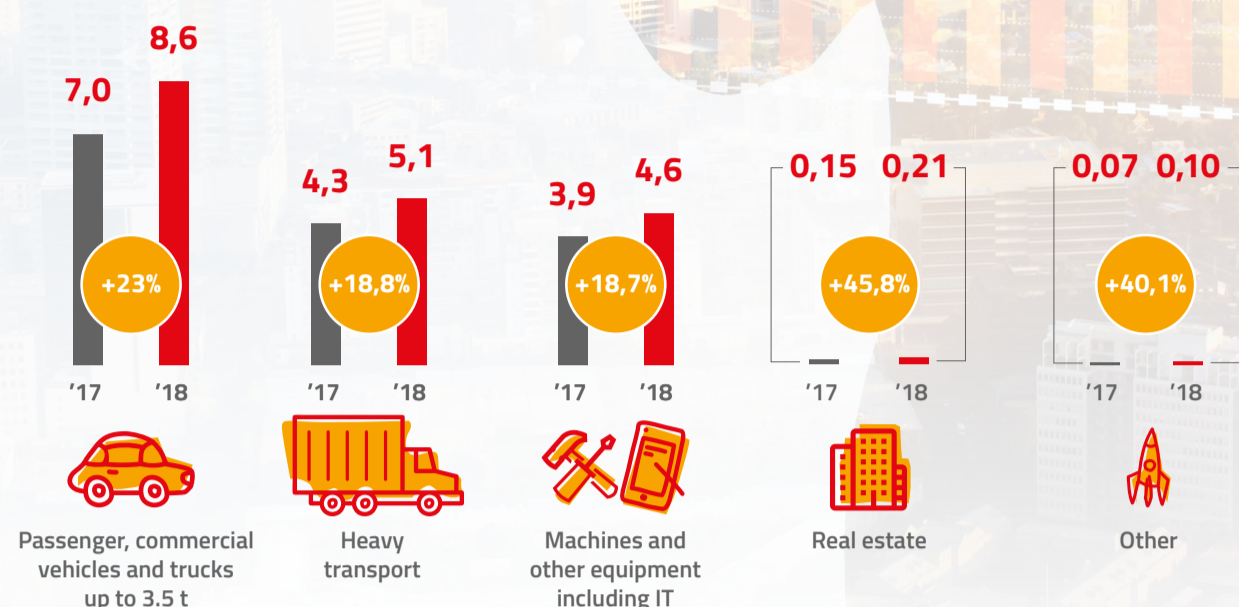




Polish Leasing Market after Q1 2018

New lease volumes per asset type – % period on period (2018/2017) after Q1 (PLN billion)



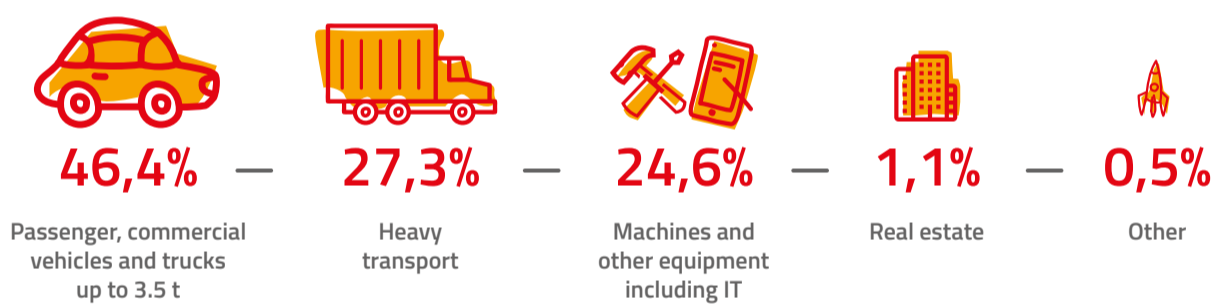
Source: PLA

Numbers



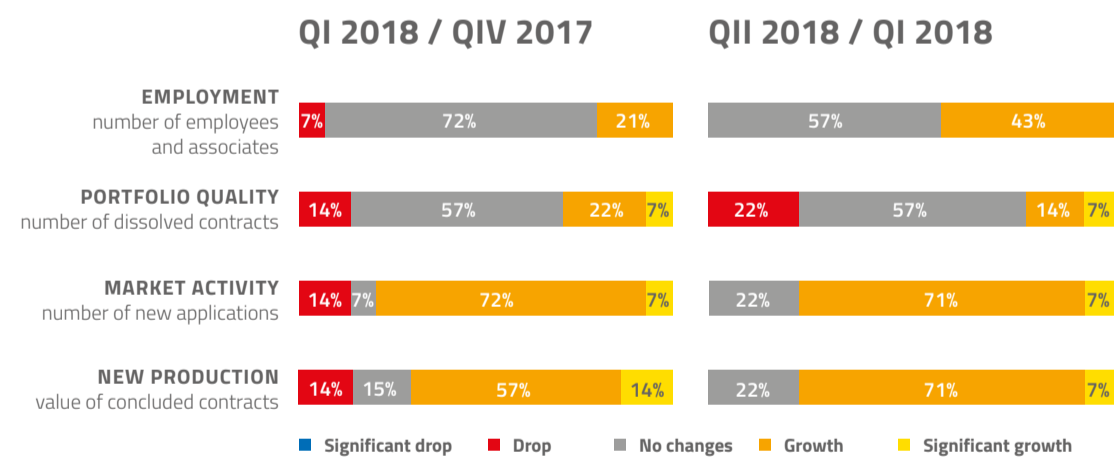
Source: PLA

Structure of financed assets



Source: PLA

Evaluation of leasing industry economic situation



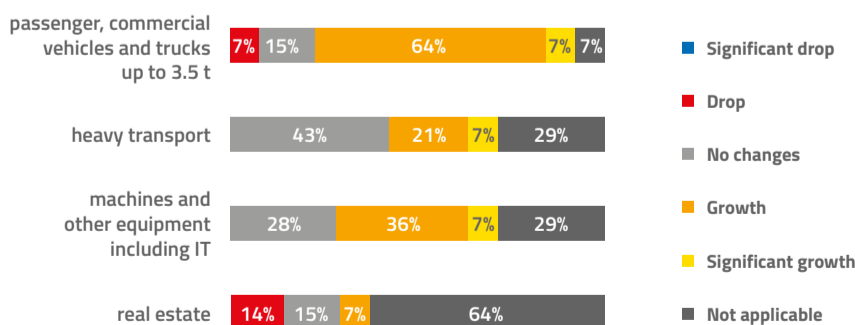
■ Significant drop ■ Drop ■ No changes ■ Growth ■ Significant growth



The study is conducted among the people responsible for sale in companies associated in the Polish Leasing Association. The data refer to the evaluation of the passing period, and trends for the next quarter. The percent amounts determine what share of the surveyed companies have chosen a particular answer.

Source: PLA

QII 2018 / QI 2018



The study determines how, by representatives of leasing companies, will change the value of financed assets in Q2 2018 comparing to Q1 2018

Source: PLA